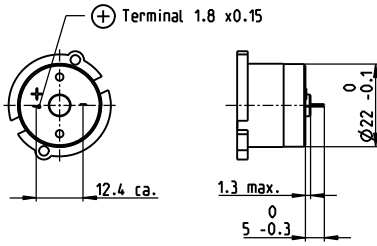


DC Tacho DCT 22 0.52 Volt

sensor



Important Information

- Tacho with moving coil, maxon system.
- Tacho with precious metal commutation.
- To establish total inertia add motor and tacho inertias.
- With the output shaft turning CW as seen from the mounting surface, the tacho output voltage will be positive at the + terminal.
- A high impedance load is recommended at tacho terminals.
- The tacho current should be kept low.
- The indicated resonance frequency refers to the motor-tacho rotor system.

- Stock program
- Standard program
- Special program (on request)

Part Numbers

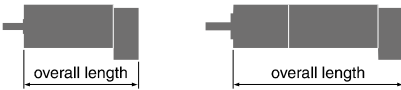
118909	118910
--------	--------

Type

Shaft diameter (mm)

3

4



maxon Modular System

+ Motor	Page	+ Gearhead	Page	Overall length [mm] / • see Gearhead
RE 25	134/136			76.8
RE 25	134/136	GP 26, 0.75 - 4.5 Nm	381	•
RE 25	134/136	GP 32, 0.75 - 4.5 Nm	383/384	•
RE 25	134/136	GP 32, 1.0 - 6.0 Nm	387	•
RE 25	134/136	GP 32, 1.0 - 4.5 Nm	394	•
RE 25	134/136	GP 32 S	416-421	•
RE 25, 20 W	135			65.3
RE 25, 20 W	135	GP 22, 0.5 - 1.0 Nm	374	•
RE 25, 20 W	135	GP 26, 0.75 - 4.5 Nm	381	•
RE 25, 20 W	135	GP 32, 0.75 - 4.5 Nm	383/384	•
RE 25, 20 W	135	GP 32, 0.75 - 6.0 Nm	387	•
RE 25, 20 W	135	KD 32, 1.0 - 4.5 Nm	394	•
RE 25, 20 W	135	GP 32 S	416-421	•
RE 35, 90 W	139			89.1
RE 35, 90 W	139	GP 32, 0.75 - 6.0 Nm	383-390	•
RE 35, 90 W	139	GP 32, 4.0 - 8.0 Nm	391	•
RE 35, 90 W	139	GP 42, 3.0 - 15 Nm	396	•
RE 35, 90 W	139	GP 32 S	416-421	•

Technical Data

Output voltage per 1000 rpm	0.52 V	Max. current	10 mA
Terminal resistance tacho	37.7 Ω	Tolerance of the output voltage	± 15 %
Typical peak to peak ripple	≤ 6 %	Rotor inertia (tacho only)	< 3 gcm ²
Ripple frequency per turn	14	Resonance frequency with motors on p. 134 - 136	> 2 kHz
Linear voltage tolerance, 500 to 5000 rpm	± 0.2 %	with motors on p. 139	> 4.5 kHz
Linear voltage tolerance with 10 kΩ load resistance	± 0.7 %	Temperature range	-20 ... +65 °C
Polarity error	± 0.1 %		
Temperature coefficient of EMF (magnet)	-0.02 % /°C	Option: Pigtails in place of solder terminals.	
Temperature coefficient of coil resistance	+0.4 % /°C		

Connection example

