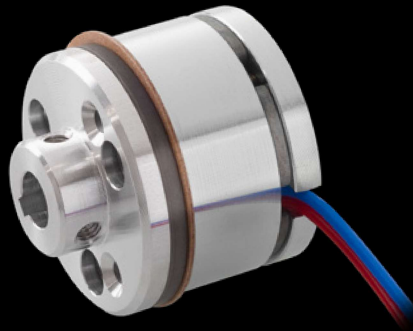


# maxon accessories & batteries

Brake AB 20 24 VDC, 0.1 Nm	516–517
Brake AB 28 24 VDC, 0.4 Nm	518–520
Brake AB 32 24 VDC, 0.4 Nm	521
Brake AB 34 24 VDC, 1.0 Nm	<b>NEW</b> 522
Brake AB 41 24 VDC, 2.0 Nm	523
Brake AB 44 24 VDC, 2.5 Nm	524
End caps	525
ECX 13 Connection cable	526
ECX 16 Connection cable	527
ECX 19 Connection cable	528
ECX 22 Connection cable	529
Batteries and battery management system (BMS)	530



Useful parts complete maxon's full range of drive technology products. Brakes may only be assembled with motors in the delivery plant.

# Brake AB 20 24 VDC, 0.1 Nm

accessories



### Important Information

- Permanent magnet – single-face brake for DC (dry operation). Braking in unpowered condition.
- Holding brake, prevents rotation of the shaft at standstill or with turned off motor power.
- Not suitable for dynamic braking.
- Schematic image: does not necessarily reflect the delivery state.

- Stock program
- Standard program
- Special program (on request)

### Part Numbers

301212    301213

### Type



### maxon Modular System

+ Motor	Page	+ Gearhead	Page	+ Sensor	Page	∅ AB [mm]	Overall length [mm] / • see Gearhead
EC-max 22, 12 W	238					22	67.8
EC-max 22, 12 W	238	GP 22, 0.5 - 3.4 Nm	377-378			22	•
EC-max 22, 12 W	238	KD 32	394			22	•
EC-max 22, 12 W	238	GP 22 S	414/415			22	•
EC-max 22, 25 W	239					22	84.2
EC-max 22, 25 W	239	GP 22, 0.5 - 3.4 Nm	378			22	•
EC-max 22, 25 W	239	GP 32, 1 - 6 Nm	388			22	•
EC-max 22, 25 W	239	KD 32	394			22	•
EC-max 22, 25 W	239	GP 32 S	417-421			22	•
EC-max 30, 40 W	240					30	77.6
EC-max 30, 40 W	240	GP 32, 1.0 - 8.0 Nm	388/391			30	•
EC-max 30, 40 W	240	KD 32, 1.0 - 4.5 Nm	394			30	•
EC-max 30, 40 W	240	GP 32 S	417-421			30	•
EC-max 30, 40 W	240			HEDL 5540	475	30	98.4
EC-max 30, 40 W	240	GP 32, 1.0 - 8.0 Nm	388/391	HEDL 5540	475	30	•
EC-max 30, 40 W	240	KD 32, 1.0 - 4.5 Nm	394	HEDL 5540	475	30	•
EC-max 30, 40 W	240	GP 32 S	417-421	HEDL 5540	475	30	•
EC-max 30, 60 W	241					30	99.6
EC-max 30, 60 W	241	GP 32, 1.0 - 8.0 Nm	388/391			30	•
EC-max 30, 60 W	241	KD 32, 1.0 - 4.5 Nm	394			30	•
EC-max 30, 60 W	241	GP 42, 3 - 15 Nm	397			30	•
EC-max 30, 60 W	241			HEDL 5540	475	30	120.4
EC-max 30, 60 W	241	GP 32, 1.0 - 8.0 Nm	388/391	HEDL 5540	475	30	•
EC-max 30, 60 W	241	KD 32, 1.0 - 4.5 Nm	394	HEDL 5540	475	30	•
EC-max 30, 60 W	241	GP 42, 3 - 15 Nm	397	HEDL 5540	475	30	•
EC-4pole 30, 100 W	249					30	83.2
EC-4pole 30, 100 W	249	GP 32, 4.0 - 8.0 Nm	391			30	•
EC-4pole 30, 100 W	249	GP 42, 3 - 15 Nm	397			30	•
EC-4pole 30, 100 W	249			16 EASY/XT/Abs.	453-455	30	97.3
EC-4pole 30, 100 W	249	GP 32, 4.0 - 8.0 Nm	391	16 EASY/XT/Abs.	453-455	30	•
EC-4pole 30, 100 W	249	GP 42, 3 - 15 Nm	397	16 EASY/XT/Abs.	453-455	30	•
EC-4pole 30, 100 W	249			16 EASY Abs. XT	455	30	97.8
EC-4pole 30, 100 W	249	GP 32, 4.0 - 8.0 Nm	391	16 EASY Abs. XT	455	30	•
EC-4pole 30, 100 W	249	GP 42, 3 - 15 Nm	397	16 EASY Abs. XT	455	30	•
EC-4pole 30, 100 W	249			16 RIO	466	30	95.8
EC-4pole 30, 100 W	249	GP 32, 4.0 - 8.0 Nm	391	16 RIO	466	30	•
EC-4pole 30, 100 W	249	GP 42, 3 - 15 Nm	397	16 RIO	466	30	•
EC-4pole 30, 100 W	249			AEDL/HEDL	469/476	30	104
EC-4pole 30, 100 W	249	GP 32, 4.0 - 8.0 Nm	391	AEDL/HEDL	469/476	30	•
EC-4pole 30, 100 W	249	GP 42, 3 - 15 Nm	397	AEDL/HEDL	469/476	30	•

### Technical Data

Max. permissible static torque at 20°C	0.1 Nm	Nominal voltage, smoothed	24 VDC ±10%	<b>Pin Allocation</b>	<b>Designation</b>
Mass inertia	1.8 gcm <sup>2</sup>	Resistance	R <sub>20</sub> = 227 Ω ±6%	<b>Cable (AWG 26)</b>	red
Max. speed	49 000 rpm	Duty cycle	100%	blue	U <sub>Brake</sub> + 24 VDC
Weight	29 g	Reaction time	≤ 12 ms		U <sub>Brake</sub> GND
Ambient temperature range	10 ... 100°C		– Coupling	Min. cable length	250 mm
			– Spring		

# Brake AB 20 24 VDC, 0.1 Nm



## Important Information

- Permanent magnet – single-face brake for DC (dry operation). Braking in unpowered condition.
- Holding brake, prevents rotation of the shaft at standstill or with turned off motor power.
- Not suitable for dynamic braking.
- Schematic image: does not necessarily reflect the delivery state.

accessories

- Stock program
- Standard program
- Special program (on request)

## Part Numbers

301212 301213

## Type



## maxon Modular System

+ Motor	Page	+ Gearhead	Page	+ Sensor	Page	∅ AB [mm]	Overall length [mm] / • see Gearhead
EC-4pole 30, 200 W	251					30	100.2
EC-4pole 30, 200 W	251	GP 32, 4.0 - 8.0 Nm	391			30	•
EC-4pole 30, 200 W	251	GP 42, 3 - 15 Nm	397			30	•
EC-4pole 30, 200 W	251			16 EASY/XT/Abs.	453-455	30	114.3
EC-4pole 30, 200 W	251	GP 32, 4.0 - 8.0 Nm	391	16 EASY/XT/Abs.	453-455	30	•
EC-4pole 30, 200 W	251	GP 42, 3 - 15 Nm	397	16 EASY/XT/Abs.	453-455	30	•
EC-4pole 30, 200 W	251			16 EASY Abs. XT	455	30	114.8
EC-4pole 30, 200 W	251	GP 32, 4.0 - 8.0 Nm	391	16 EASY Abs. XT	455	30	•
EC-4pole 30, 200 W	251	GP 42, 3 - 15 Nm	397	16 EASY Abs. XT	455	30	•
EC-4pole 30, 200 W	251			16 RIO	466	30	112.8
EC-4pole 30, 200 W	251	GP 32, 4.0 - 8.0 Nm	391	16 RIO	466	30	•
EC-4pole 30, 200 W	251	GP 42, 3 - 15 Nm	397	16 RIO	466	30	•
EC-4pole 30, 200 W	251			AEDL/HEDL	469/476	30	121
EC-4pole 30, 200 W	251	GP 32, 4.0 - 8.0 Nm	391	AEDL/HEDL	469/476	30	•
EC-4pole 30, 200 W	251	GP 42, 3 - 15 Nm	397	AEDL/HEDL	469/476	30	•

## Technical Data

Technical Data	Pin Allocation	Designation
Max. permissible static torque at 20°C	24 VDC ±10%	U <sub>Brake</sub> + 24 VDC
Mass inertia	R <sub>20</sub> = 227 Ω ±6%	U <sub>Brake</sub> GND
Max. speed	Resistance	
Weight	Duty cycle	
Ambient temperature range	Reaction time	
	- Coupling	
	Gearing	

# Brake AB 28 24 VDC, 0.4 Nm

accessories



### Important Information

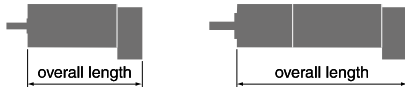
- Permanent magnet – single-face brake for DC (dry operation). Braking in unpowered condition.
- Holding brake, prevents rotation of the shaft at standstill or with turned off motor power.
- Not suitable for dynamic braking.
- It is possible to lower the voltage applied to the brake after it has been energized, for the purpose of reducing heat loss.
- Schematic image: does not necessarily reflect the delivery state.

- Stock program
- Standard program
- Special program (on request)

### Part Numbers

301215

### Type



### maxon Modular System

+ Motor	Page	+ Gearhead	Page	+ Sensor	Page	∅ AB [mm]	Overall length [mm] / • see Gearhead
EC-max 40, 70 W	242					40	92.4
EC-max 40, 70 W	242	GP 42, 3 - 15 Nm	397			40	•
EC-max 40, 70 W	242			HEDL 5540	474	40	110.7
EC-max 40, 70 W	242	GP 42, 3 - 15 Nm	397	HEDL 5540	474	40	•
EC-max 40, 120 W	243					40	122.4
EC-max 40, 120 W	243	GP 52, 4 - 30 Nm	402			40	•
EC-max 40, 120 W	243			HEDL 5540	474	40	140.7
EC-max 40, 120 W	243	GP 52, 4 - 30 Nm	402	HEDL 5540	474	40	•

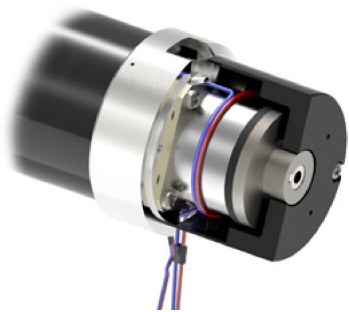
### Technical Data

Max. permissible static torque at 20°C	0.4 Nm	Nominal voltage, smoothed	24 VDC ±10%
Mass inertia	10 gcm <sup>2</sup>	Resistance	R <sub>20</sub> = 92.5 Ω ±6%
Max. speed	16 000 rpm	Duty cycle	100%
Weight	0,05 kg	Reaction time	≤ 13 ms
Ambient temperature range	-40...85°C	- Coupling	≤ 23 ms

### Pin Allocation

Cable (AWG 26)	Designation
red	U <sub>Brake</sub> + 24 VDC
blue	U <sub>Brake</sub> GND
Min. cable length	250 mm

# Brake AB 28 24 VDC, 0.4 Nm



## Important Information

- Permanent magnet – single-face brake for DC (dry operation). Braking in unpowered condition.
- Holding brake, prevents rotation of the shaft at standstill or with turned off motor power.
- Not suitable for dynamic braking.
- It is possible to lower the voltage applied to the brake after it has been energized, for the purpose of reducing heat loss.
- Schematic image: does not necessarily reflect the delivery state.

accessories

- Stock program
- Standard program
- Special program (on request)

## Part Numbers

228384      228387

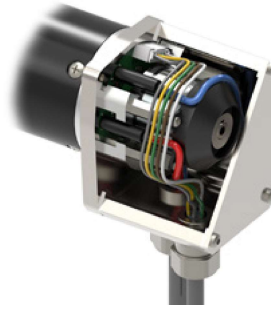
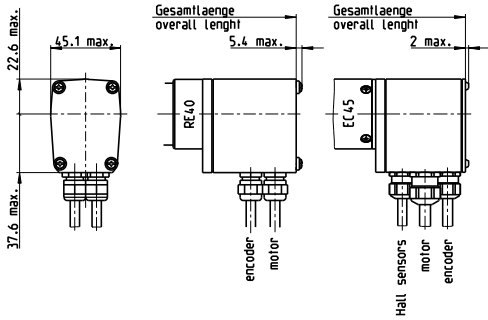
## Type



maxon Modular System						
+ Motor	Page	+ Gearhead	Page	+ Sensor	Page	∅ AB [mm] Overall length [mm] / * see Gearhead
RE 25, 20 W	135					40 77,1
RE 25, 20 W	135	GP 22, 0,5 -1.0 Nm	375			40 •
RE 25, 20 W	135	GP 26, 0,75 - 4,5 Nm	381			40 •
RE 25, 20 W	135	GP 32, 0,75 - 4,5 Nm	383			40 •
RE 25, 20 W	135	GP 32, 0,75 - 4,5 Nm	384			40 •
RE 25, 20 W	135	GP 32, 1,0 - 6,0 Nm	387/394			40 •
RE 25, 20 W	135	GP 32 S	416-420			40 •
RE 25, 20 W	135			HED_ 5540	472/473	40 94,3
RE 25, 20 W	135	GP 22, 0,5 - 1.0 Nm	375	HED_ 5540	472/473	40 •
RE 25, 20 W	135	GP 26, 0,75 - 4,5 Nm	381	HED_ 5540	472/473	40 •
RE 25, 20 W	135	GP 32, 0,75 - 4,5 Nm	383	HED_ 5540	472/473	40 •
RE 25, 20 W	135	GP 32, 0,75 - 4,5 Nm	384	HED_ 5540	472/473	40 •
RE 25, 20 W	135	GP 32, 1,0 - 6,0 Nm	387/394	HED_ 5540	472/473	40 •
RE 25, 20 W	135	GP 32 S	416-420	HED_ 5540	472/473	40 •
RE 25, 20 W	136					40 88,6
RE 25, 20 W	136	GP 26, 0,75 - 4,5 Nm	381			40 •
RE 25, 20 W	136	GP 32, 0,75 - 4,5 Nm	383			40 •
RE 25, 20 W	136	GP 32, 0,75 - 4,5 Nm	384			40 •
RE 25, 20 W	136	GP 32, 1,0 - 6,0 Nm	387/394			40 •
RE 25, 20 W	136	GP 32 S	416-420			40 •
RE 25, 20 W	136			HED_ 5540	471/473	40 105,8
RE 25, 20 W	136	GP 26, 0,75 - 4,5 Nm	381	HED_ 5540	471/473	40 •
RE 25, 20 W	136	GP 32, 0,4 - 2,0 Nm	383	HED_ 5540	471/473	40 •
RE 25, 20 W	136	GP 32, 0,75 - 4,5 Nm	384	HED_ 5540	471/473	40 •
RE 25, 20 W	136	GP 32, 1,0 - 6,0 Nm	387/394	HED_ 5540	471/473	40 •
RE 25, 20 W	136	GP 32 S	416-420	HED_ 5540	471/473	40 •
RE 35, 90 W	139					40 107,1
RE 35, 90 W	139	GP 32, 0,75 - 6,0 Nm	383-390			40 •
RE 35, 90 W	139	GP 32, 4,0 - 8,0 Nm	391			40 •
RE 35, 90 W	139	GP 42, 3 - 15 Nm	396			40 •
RE 35, 90 W	139			HED_ 5540	471/473	40 124,3
RE 35, 90 W	139	GP 32, 0,75 - 6,0 Nm	383-390	HED_ 5540	471/473	40 •
RE 35, 90 W	139	GP 32, 4,0 - 8,0 Nm	391	HED_ 5540	471/473	40 •
RE 35, 90 W	139	GP 42, 3 - 15 Nm	396	HED_ 5540	471/473	40 •
RE 35, 90 W	139	GP 32 S	416-420			40 •
RE 35, 90 W	139	GP 32 S	416-420	HED_ 5540	471/473	40 •
RE 40, 150 W	141					45 107,1
RE 40, 150 W	141	GP 42, 3 - 15 Nm	396			45 •
RE 40, 150 W	141	GP 52, 4 - 30 Nm	401			45 •
RE 40, 150 W	141			HED_ 5540	471/473	45 124,3
RE 40, 150 W	141	GP 42, 3 - 15 Nm	396	HED_ 5540	471/473	45 •
RE 40, 150 W	141	GP 52, 4 - 30 Nm	401	HED_ 5540	471/473	45 •

Technical Data				Pin Allocation	
Max. permissible static torque at 20°C	0.4 Nm	Nominal voltage, smoothed	24 VDC ±10%	<b>Cable (AWG 26)</b>	<b>Designation</b>
Mass inertia	10 gcm <sup>2</sup>	Resistance	R <sub>20</sub> = 92,5 Ω ±6%	red	U <sub>Brake</sub> + 24 VDC
Max. speed	16 000 rpm	Duty cycle	100%	blue	U <sub>Brake</sub> GND
Weight	0,05 kg	Reaction time	– Coupling ≤ 13 ms	red	Motor+
Ambient temperature range	-5...+85°C		– Opening ≤ 27 ms	black	Motor-
				Min. cable length	250 mm

# Brake AB 28 24 VDC, 0.4 Nm



### Important Information

- Permanent magnet – single-face brake for DC (dry operation). Braking in unpowered condition.
- Holding brake, prevents rotation of the shaft at standstill or with turned off motor power.
- Not suitable for dynamic braking.
- It is possible to lower the voltage applied to the brake after it has been energized, for the purpose of reducing heat loss.
- Schematic image: does not necessarily reflect the delivery state.

- Stock program
- Standard program
- Special program (on request)

### Part Numbers

228389    228390

### Type



### maxon Modular System

+ Motor	Page	+ Gearhead	Page	+ Sensor	Page	Overall length [mm] / * see Gearhead
RE 40, 150 W	141					115.1
RE 40, 150 W	141	GP 42, 3 - 15 Nm	396			•
RE 40, 150 W	141	GP 52, 4 - 30 Nm	401			•
RE 40, 150 W	141			HEDL 9140	478	135.6
RE 40, 150 W	141	GP 42, 3 - 15 Nm	396	HEDL 9140	478	•
RE 40, 150 W	141	GP 52, 4 - 30 Nm	401	HEDL 9140	478	•
EC 45, 150 W	230					118.6
EC 45, 150 W	230	GP 42, 3 - 15 Nm	396			•
EC 45, 150 W	230	GP 52, 4 - 30 Nm	401			•
EC 45, 150 W	230			HEDL 9140	478	135.6
EC 45, 150 W	230	GP 42, 3 - 15 Nm	396	HEDL 9140	478	•
EC 45, 150 W	230	GP 52, 4 - 30 Nm	401	HEDL 9140	478	•
EC 45, 250 W	231					151.4
EC 45, 250 W	231	GP 42, 3 - 15 Nm	397			•
EC 45, 250 W	231	GP 52, 4 - 30 Nm	401			•
EC 45, 250 W	231	GP 62, 8 - 50 Nm	403			•
EC 45, 250 W	231			HEDL 9140	478	168.4
EC 45, 250 W	231	GP 42, 3 - 15 Nm	397	HEDL 9140	478	•
EC 45, 250 W	231	GP 52, 4 - 30 Nm	401	HEDL 9140	478	•
EC 45, 250 W	231	GP 62, 8 - 50 Nm	403	HEDL 9140	478	•

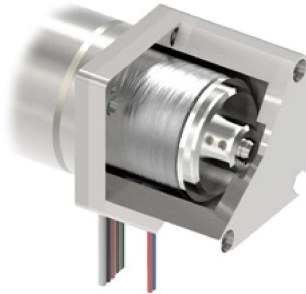
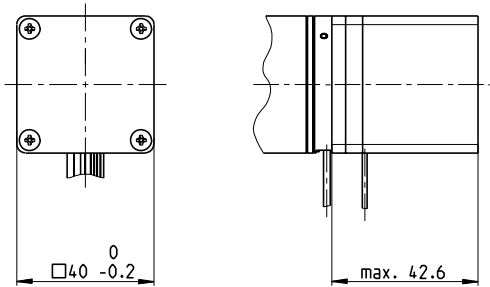
### Technical Data

Max. permissible static torque at 20°C	0.4 Nm	Nominal voltage, smoothed	24 VDC ±10%
Mass inertia	10 gcm <sup>2</sup>	Resistance	R <sub>20</sub> = 92.5 Ω ±6%
Max. speed	16 000 rpm	Duty cycle	100%
Weight	0.05 kg	Reaction time	≤ 13 ms
Ambient temperature range	-5...+85°C	- Coupling	≤ 27 ms
		- Opening	

### Pin Allocation

	from motor clamp	Designation
	RE 40	
Cable green	(AWG 20)	U <sub>Brake</sub> + 24 VDC
Cable yellow	(AWG 20)	U <sub>Brake</sub> GND
	EC 45	
Cable No 4	(AWG 18)	U <sub>Brake</sub> + 24 VDC
Cable No 5	(AWG 18)	U <sub>Brake</sub> GND
Min. cable length		500 mm

# Brake AB 32 24 VDC, 0.4 Nm



## Important Information

- Permanent magnet – single-face brake for DC (dry operation). Braking in unpowered condition.
- Holding brake, prevents rotation of the shaft at standstill or with turned off motor power.
- Not suitable for dynamic braking.
- It is possible to lower the voltage applied to the brake after it has been energized, for the purpose of reducing heat loss.

accessories

- Stock program
- Standard program
- Special program (on request)

## Part Numbers

392335

## Type



## maxon Modular System

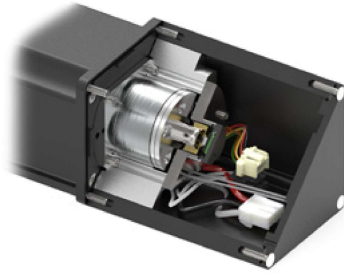
+ Motor	Page	+ Gearhead	Page	+ Sensor	Page	Overall length [mm] / • see Gearhead
EC 40, 170 W	229					122.7
EC 40, 170 W	229	GP 42, 3 - 15 Nm	396			•
EC 40, 170 W	229	GP 52, 4 - 30 Nm	401			•
EC 40, 170 W	229			HED_ 5540	472/474	141.1
EC 40, 170 W	229	GP 42, 3 - 15 Nm	396	HED_ 5540	472/474	•
EC 40, 170 W	229	GP 52, 4 - 30 Nm	401	HED_ 5540	472/474	•

Technical Data				Pin Allocation	
Max. permissible static torque at 20°C	0,4 Nm	Nominal voltage, smoothed	24 VDC ±10%	<b>Cable (AWG 24)</b>	<b>Designation</b>
Mass inertia	19 gcm <sup>2</sup>	Resistance	R <sub>20</sub> = 100 Ω ±7%	red	U <sub>Brake</sub> + 24 VDC
Max. speed	10000 rpm	Duty cycle	100%	blue	U <sub>Brake</sub> GND
Weight	0,1 kg	Reaction time	≤ 13 ms		
Ambient temperature range	40...+100°C	- Coupling	≤ 24 ms	Min. cable length	350 mm

# Brake AB 32 24 VDC, 0.4 Nm

**NEW**

accessories



**Important Information**

- Permanent magnet – single-face brake for DC (dry operation). Braking in unpowered condition.
- Holding brake, prevents rotation of the shaft at standstill or with turned off motor power.
- Not suitable for dynamic braking.

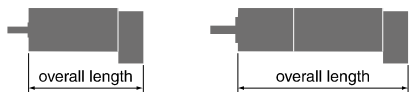
- Stock program
- Standard program
- Special program (on request)

**Part Numbers**

x drives

**Type**

--	--	--	--



**maxon Modular System**

+ Drive	Page	+ Gearhead	Page	+ Sensor	Page	Overall length [mm] / * see Gearhead
IDX 56 M						online
IDX 56 L						online

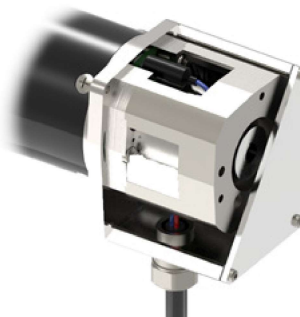
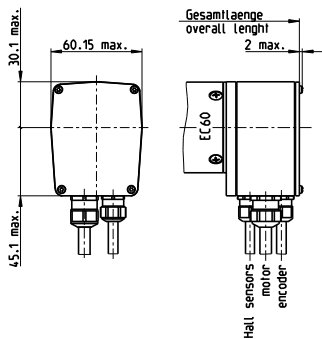
+ Motor	Page	+ Gearhead	Page	+ Sensor	Page	Overall length [mm] / * see Gearhead
IDX 56 M						online
IDX 56 L						online

**Technical Data**

Max. permissible static torque at 20°C	1.0 Nm	Nominal voltage, smoothed	24 VDC -10...+6%	Pin Allocation	online
Mass inertia	29.6 gcm <sup>2</sup>	Resistance	R <sub>20</sub> = 57.6 Ω ±7%		
Max. speed	10 000 rpm	Duty cycle	100%		
Weight	0.1 kg	Reaction time	≤ 12 ms	- Coupling	
Ambient temperature range	10 ... 85°C		< 20 ms	Opening	



# Brake AB 41 24 VDC, 2.0 Nm



## Important Information

- Permanent magnet – single-face brake for DC (dry operation). Braking in unpowered condition.
- Holding brake, prevents rotation of the shaft at standstill or with turned off motor power.
- Not suitable for dynamic braking.

- Stock program
- Standard program
- Special program (on request)

## Part Numbers

228998

## Type



## maxon Modular System

+ Motor	Page	+ Gearhead	Page	+ Sensor	Page	Overall length [mm] / • see Gearhead
EC 60, 400 W	232					190.9
EC 60, 400 W	232	GP 81, 20 - 120 Nm	404			•
EC 60, 400 W	232			HEDL 9140	478	214.9
EC 60, 400 W	232	GP 81, 20 - 120 Nm	404	HEDL 9140	478	•

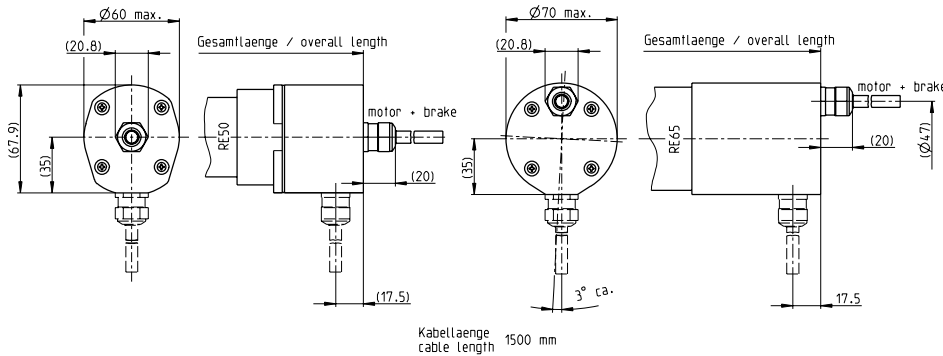
## Technical Data

Max. permissible static torque at 20°C	2.0 Nm	Nominal voltage, smoothed	24 VDC -10 ... +6%
Mass inertia	45 gcm <sup>2</sup>	Resistance	R <sub>20</sub> = 72 Ω ±7%
Max. speed	10000 rpm	Duty cycle	100%
Weight	0.18 kg	Reaction time	≤ 2 ms
Ambient temperature range	5 ... 85°C	- Coupling	≤ 25 ms

## Pin Allocation

	from motor clamp	Designation
Cable red	No 4 (AWG 16)	U <sub>Brake</sub> + 24 VDC
Cable black	No 5 (AWG 16)	U <sub>Brake</sub> GND
Min. cable length		500 mm

# Brake AB 44 24 VDC, 2.5 Nm



## Important Information

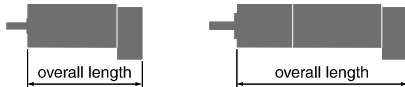
- Permanent magnet – single-face brake for DC (dry operation). Braking in unpowered condition.
- Holding brake, prevents rotation of the shaft at standstill or with turned off motor power.
- Not suitable for dynamic braking.
- It is possible to lower the voltage applied to the brake after it has been energized, for the purpose of reducing heat loss.
- Protection: IP54

- Stock program
- Standard program
- Special program (on request)

## Part Numbers

Cable output axial	386052	385999
Cable output radial	386054	386000

## Type



## maxon Modular System

+ Motor	Page	+ Gearhead	Page	+ Sensor	Page	Overall length [mm] / • see Gearhead
RE 50, 200 W	142					170.4
RE 50, 200 W	142	GP 52, 4 - 30 Nm	401			•
RE 50, 200 W	142	GP 62, 8 - 50 Nm	403			•
RE 50, 200 W	142			HEDL 9140	479	183.4
RE 50, 200 W	142	GP 52, 4 - 30 Nm	401	HEDL 9140	479	•
RE 50, 200 W	142	GP 62, 8 - 50 Nm	403	HEDL 9140	479	•
RE 65, 250 W	143					187.5
RE 65, 250 W	143	GP 81, 20 - 120 Nm	404			•
RE 65, 250 W	143			HEDL 9140	479	205.5
RE 65, 250 W	143	GP 81, 20 - 120 Nm	404	HEDL 9140	479	•

## Technical Data

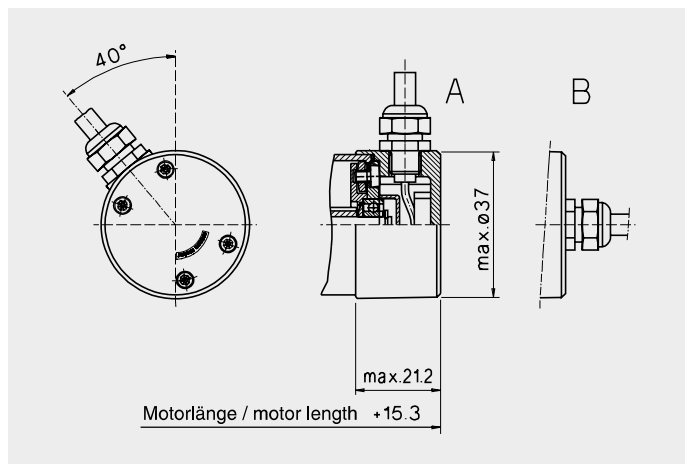
Max. permissible static torque at 20°C	2.5 Nm
Mass inertia	90 gcm <sup>2</sup>
Max. speed	10000 rpm
Weight	0.19 kg
Ambient temperature range	-40...+100°C

Nominal voltage, smoothed	24 VDC ±10%
Resistance	R <sub>20</sub> = 64 Ω ±7%
Duty cycle	100%
Reaction time	≤ 20 ms
- Coupling	≤ 35 ms
- Opening	

## Pin Allocation

Cable (AWG 18)	Designation
white	Motor+
brown	Motor-
green	U <sub>Brake</sub> + 24 VDC
yellow	U <sub>Brake</sub> GND
Min. cable length	1490 mm

# End Caps



## End cap for maxon DC motor RE 35

Details for motor see page 139

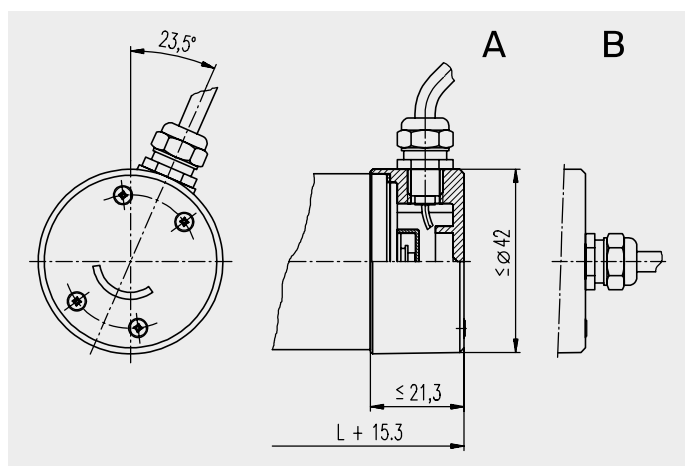
- Plastic housing
- Protection to IP54
- With 500 mm cable, AWG 20 (2 × 0.5 mm<sup>2</sup>) other lengths on request!
- Radial or axial cable outlet
- Assembly only by maxon motor. The shaft must be shortened.

### Pin Allocation

Cable No.	Color	Motor
1	black	+ Pol
2	black	- Pol

### Part Numbers

137235	A	End cap with radial cable outlet (500 mm)
137234	B	End cap with axial cable outlet (500 mm)



## End cap for maxon DC motor RE 40

Details for motor see page 141

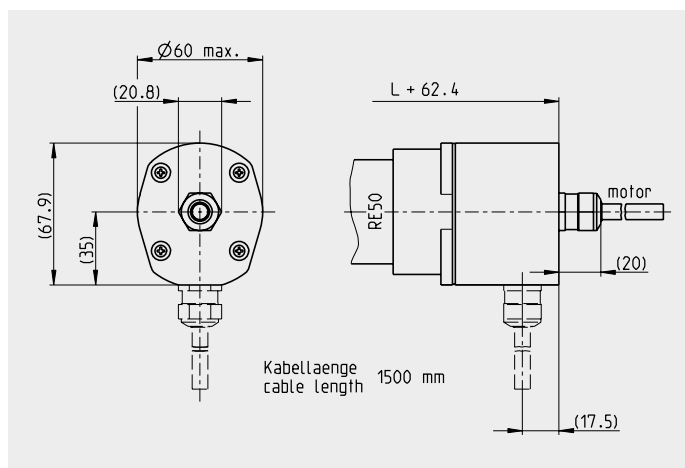
- Plastic housing
- Protection to IP54
- With 500 mm cable, AWG 20 (2 × 0.5 mm<sup>2</sup>) other lengths on request!
- Radial or axial cable outlet
- Assembly only by maxon motor. The shaft must be shortened.

### Pin Allocation

Cable No.	Color	Motor
1	black	+ Pol
2	black	- Pol

### Part Numbers

232341	A	End cap with radial cable outlet (500 mm)
232343	B	End cap with axial cable outlet (500 mm)



## End cap for maxon DC motor RE 50

Details for motor see page 142

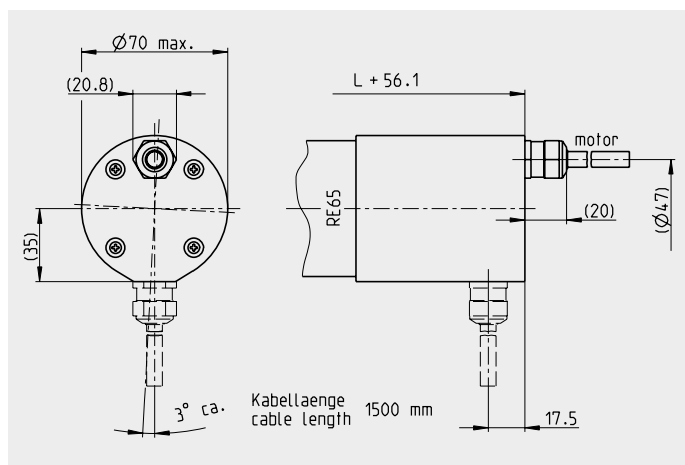
- Aluminium housing
- Protection to IP54
- With 1500 mm cable, AWG 18 (2 × 1.0 mm<sup>2</sup>) other lengths on request!
- Radial or axial cable outlet
- Assembly only by maxon motor.

### Pin Allocation

Cable No.	Color	Motor
1	white	+ Pol
2	brown	- Pol

### Part Numbers

386056	A	End cap with radial cable outlet (1500 mm)
386055	B	End cap with axial cable outlet (1500 mm)



## End cap for maxon DC motor RE 65

Details for motor see page 143

- Aluminium housing
- Protection to IP54
- With 1500 mm cable, AWG 18 (2 × 1.0 mm<sup>2</sup>) other lengths on request!
- Radial or axial cable outlet
- Assembly only by maxon motor.

### Pin Allocation

Cable No.	Color	Motor
1	white	+ Pol
2	brown	- Pol

### Part Numbers

386004	A	End cap with radial cable outlet (1500 mm)
386003	B	End cap with axial cable outlet (1500 mm)